

# Products



**Access for Computers,  
Communication Devices  
and Mobile Devices**

## HeadMouse® Nano



HeadMouse Nano is the leading solution for wireless head-tracking on computers, tablets, smartphones and alternative communication devices (AAC). HeadMouse takes the place of a mouse by translating the movements of a user's head into proportional movements of the device's on-screen mouse pointer. It works and connects with USB just like a mouse. No special software required. HeadMouse Nano is a perfect solution for people who cannot use or have limited use of their hands.



## Swiftly™ – Wireless USB Switch Interface



Swiftly is a speedy USB switch interface in a convenient and compact size. Supporting 2-wired or 3-wireless switches through Beam.™ Swiftly can output mouse clicks, joystick buttons and keyboard keys without special driver software. Works with computers, tablets, smartphones and speech generating devices. Supports remote Wakeup.



## Tapio™ – iOS Device Switch Interface

Tapio is a switch interface optimized for use with iPad and iPhone. It supports two switches for Auto or Step Scanning. It generates switch events compatible with Apple Switch Control and third party apps.



Tapio direct connects with an Apple Lightning adapter – with or without a recharge port. Therefore, no messy issues with Bluetooth pairing and batteries.

## Beam™ – Wireless Switch Transmitter



Tired of wires? If so, check out Beam. Up to 3 switches can be connected to Beam, enabling HeadMouse users to click and drag wirelessly with left, right and middle mouse buttons. Beam can also team with Swifty allowing users to remotely activate mouse clicks, joystick buttons and keyboard keys.

## Orby™ – Adaptive Switch



Orby is a colorful button-style adaptive switch featuring a smooth contoured design that is 2.5-inches in diameter and less than one inch tall. Orby is a perfect access switch for emulating alternative mouse buttons, for scanning computers, tablets and communication devices, interacting with simple toys or controlling any other device that can be navigated with one or more momentary switches.

## Sip/Puff Single User Packages

### Sip/Puff Switch with Headset or Gooseneck Interface

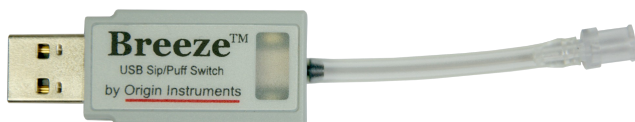
The Sip/Puff Switch translates sips and puffs into independent switch closures. No external power is required and test buttons are integrated to assist in application testing. It has one stereo and two mono 3.5mm connectors. A twist-on pneumatic interface provides a direct connection to a headset or a gooseneck interface with universal clamp.



## Sip/Puff Breeze™ with Headset or Gooseneck Interface



Breeze is an advanced USB sip/puff switch in an extremely compact package. It connects directly to standard USB ports on computers, tablets and AAC devices, and provides hardware emulation of mouse, keyboard, or joystick buttons. *With available adapter, use Breeze to access an iPad, iPhone or Android phone or tablet.* You can connect Breeze to the Headset or Gooseneck user interface.



## Sip/Puff Headset Interface

Use the universal headset with either the Sip/Puff Switch or Breeze.



## Sip/Puff Gooseneck Interface

Use the adjustable gooseneck with either the Sip/Puff Switch or Breeze



## Sip/Puff Switch Multi-User Package



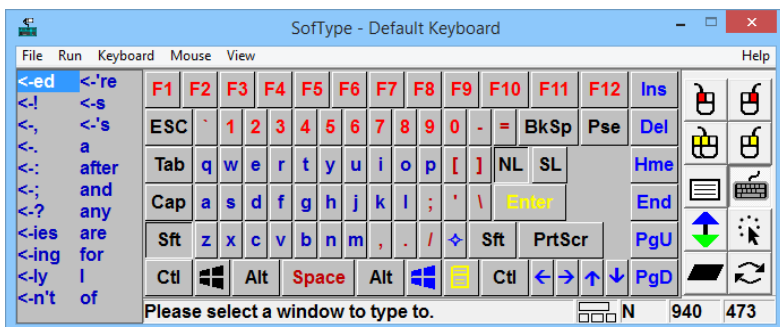
The multi-user version of the Sip/Puff Switch provides healthcare institutions, assessment centers, hospitals and educational facilities with a means to support multiple users. The behind the neck and over the ear headset is designed for use with disposable mouthpieces. Each disposable mouthpiece has an in-line aseptic filter to enable hygienic use of the Sip/Puff Switch by multiple users. Mouthpieces come in sealed packs with vinyl gloves to maintain cleanliness. The Multi-user Sip/Puff Switch is packaged in a compact case for storage and transport.

## Windows Software



We offer software utilities for providing keyboard and mouse button emulation. These utilities are Windows apps optimized for people that cannot use their hands to operate a desktop keyboard or mouse. They work well with all mouse, mouse emulators and any device that can move the standard Windows mouse pointer. Our applications work on Windows 7 and newer versions.

## SoftType™

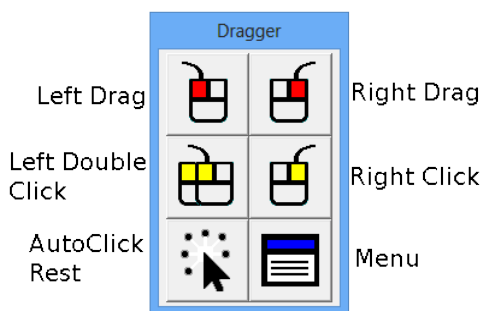


SoftType is a full-featured on-screen keyboard that can be accessed using a mouse or mouse emulator such as the HeadMouse. SoftType includes predictive word completion using customizable word lists,

macros and abbreviation expansion, multiple keyboard layouts and options for personalization. Dragger is integrated into SofType for mouse button operations and to enable selection via dwell. SofType is available for entering passwords at login and for responding to User Account Control (UAC) prompts, seen when installing a new application.

The integrated Dragger toolbar can be docked inside the SofType keyboard or free floating. A standalone version of Dragger is available for those that do not need the on-screen keyboard.

## Dragger™



Standalone Dragger is an on-screen mouse utility that provides an alternative way for performing mouse clicks and drag operations. Dragger can be used to enter right and middle mouse clicks via direct selection (often with an adaptive switch), and by holding the mouse pointer

motionless, which is commonly referred to as a "dwell click." Dragger supports Left, Right and Middle mouse buttons. Dragger is available when entering passwords at login and for responding to User Account Control (UAC) prompts, seen when installing a new application.

In standalone Dragger there is a mode for use with young children called Dragger for Kids. It presents a simplified toolbar with only two buttons, Left-Drag and AutoClick Rest. The configuration menus are hidden to minimize unintended changes to the settings.

Dragger offers a feature called HotZones.™ for access to Dragger's buttons when its toolbar is hidden by a full-screen game.

## Ordering Information

Call, mail, email or fax your order directly or contact an Origin Instruments Channel Partner:

Origin Instruments Corp.  
854 Greenview Dr.  
Grand Prairie, TX 75050

Tel: 972-606-8740  
Fax: 972-606-8741  
Email: [support@orin.com](mailto:support@orin.com)

## Trial Software

Full function, time-limited trial versions of our software can be downloaded for free evaluation from our website at: [www.orin.com](http://www.orin.com)

## Additional Information

More product information, useful resources and user videos can be found on the company website at: [www.orin.com](http://www.orin.com)

## Payment Methods

- ✓ Check or money order
- ✓ Purchase Order (from qualifying organizations)
- ✓ VISA or MasterCard
- ✓ Wire transfer

## Requests for Quotation

Call or email requests for quotation to: [support@orin.com](mailto:support@orin.com)

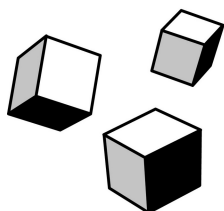
## Connect with Us



facebook/OriginInstruments



@OriginInstrum



# Origin Instruments

---

Origin Instruments Corporation  
854 Greenview Dr.  
Grand Prairie, TX 75050-2438  
[www.orin.com](http://www.orin.com)

972.606.8740  
(f) 972.606.8741  
[support@orin.com](mailto:support@orin.com)

©2020 Origin Instruments Corporation. All rights reserved. HeadMouse is a registered trademark of Origin Instruments Corporation. SofType, Swifty, Beam, Orby, Breeze, and Dragger are trademarks of Origin Instruments Corporation. All other trademarks are the property of their respective owners.