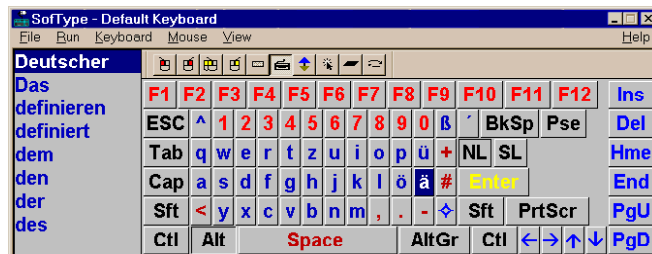
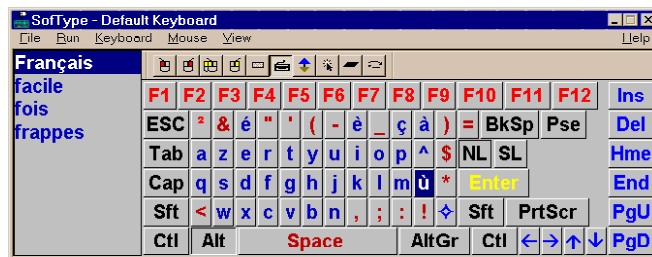
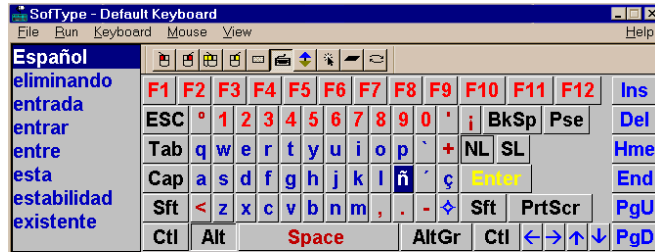


# *SofType™ 4.5*

## *International On-screen Keyboard*

For Windows 2000 and XP

- ◆ Text entry into all standard Windows applications.
- ◆ Integrated AutoClick™ and Dragger™ for performing clicking functions by dwell selection.
- ◆ Supports Roman character International keyboards.
- ◆ Several different keyboard layouts.
- ◆ Predictive word completion with customizable word list.
- ◆ Import words into a new or existing word list dictionary.
- ◆ Macro Capability and Abbreviation Expansion to reduce keystrokes.
- ◆ User friendly.
- ◆ Excellent companion for HeadMouse® or other mouse emulators.



### ***Supports International Keyboards***

SofType 4.5 is designed to display Roman character language keyboards. When a language is selected from within Windows Settings, the keyboard will automatically display the appropriate keyboard for the language selected.

### ***Macro Capability***

SofType™ now offers the use of macros to enter phrases and other long text strings, with only 2 keystrokes. Assigning a macro to one of SofType's keys is easy and requires little time. Once defined, a description of the macro can be displayed in a tip window when the pointer moves over the assigned key. Using macros will enhance a persons productivity by eliminating keystrokes.

### ***Abbreviation Expansion***

Another new addition to SofType's features is abbreviation expansion. With this feature, SofType expands a user-defined string of characters (abbreviation), into a longer, more complex character sequence, like a favorite quote or phrase. As with other SofType features, abbreviation expansion can reduce keystrokes to as few as 2 characters.

### ***Import Words***

Words can easily be imported into a new or existing word list dictionary from any text document. Multilingual users can create separate word lists for different languages. SofType stores the word lists as files, which can then be accessed when needed.

## **Word Prediction**

Predictive word completion is a SofType feature used to reduce keystrokes. Statistical word tracking allows the entry of frequently typed words with only a few keystrokes. Words can be selected from an included or personalized word list. Words can be added to the word list automatically as you type, and the user defines the criterion.

## **AutoClick™**

Mouse button clicks can be performed *anywhere* in the Windows environment using a dwell-selection feature called AutoClick. This feature enters a left mouse button click after the mouse pointer is motionless for a user-specified length of time. AutoClick can be used with Jitter Box to define a larger dwell area. Dwell time is adjustable between .2 and 10 seconds.

## **Stability Compensation**

The Jitter Box feature can be adjusted for a user's capability to control the mouse pointer. Jitter Box settings are used with AutoClick to compensate for user pointing instability and thereby ease the dwell selection task.

## **Dragger™**

The Dragger toolbar provides single switch access to all of the clicking functions of a two-button mouse. A single click entered manually or with AutoClick, can be converted to a double click, a right click, or a drag operation. For applications that do not require text entry, the SofType keyboard can be hidden while the Dragger features remain exposed. The Dragger toolbar also provides buttons that allow the user to move SofType's Keyboard or re-size the Dragger toolbar, and an AutoClick On/Off button to pause the AutoClick feature, thus eliminating inadvertent mouse clicks.

## **Access for Microsoft Windows**

Any Windows application can be accessed with SofType and a mouse or mouse emulator like the HeadMouse. Even for those who cannot use a switch, AutoClick and Dragger provide full control of the Windows environment. SofType works seamlessly with popular Internet browsers like Netscape Navigator and Microsoft Internet Explorer for complete access to the Internet.

## **Keyboard Layouts and Layout Options**

Keyboard layouts are available to suit every need: Qwerty, Alphabetical, Numerical, Frequency-Based and KidKeys. KidKeys is a basic keyboard layout geared to young users of SofType. SofType features resizable key layouts that can be independently adjusted with respect to key size, font size, and spacing between keys. The appearance of the keyboard can be modified in color and font style to suit user preference.

## **Run Applications**

Favorite applications can be started from SofType using two mouse clicks. Up to 10 applications can be added to the SofType Run menu.

## **Hardware/Software Requirements**

Windows 2000 or XP



Origin Instruments Corporation  
854 Greenview Drive  
Grand Prairie, TX 75050 USA  
Tel: 972-606-8740 Fax: 972-606-8741  
Email: [support@orin.com](mailto:support@orin.com) Web: [www.orin.com](http://www.orin.com)  
Online store: <http://shop.orin.com>

©2007 Copyright by Origin Instruments Corporation. All rights reserved. HeadMouse is registered trademark of Origin Instruments Corporation. SofType, Swifty, Dragger, Beam and AutoClick are trademarks of Origin Instruments Corporation. All other marks are property of their respective owners.