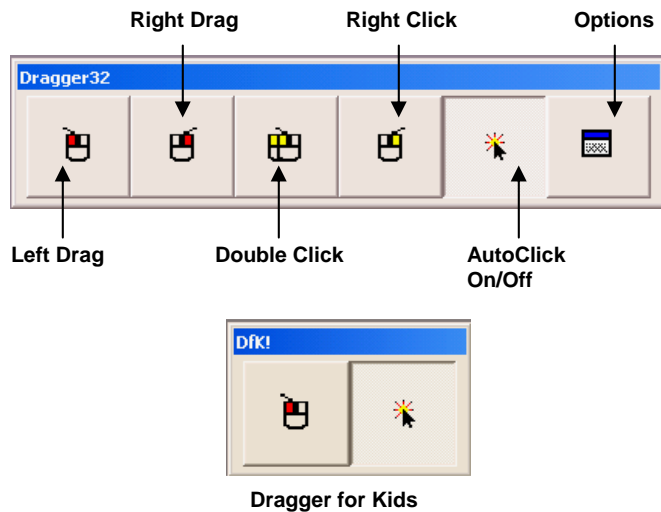


Dragger32™

A Utility for AutoClick™ or Single Click Control of Mouse Button Functions



Features

- ◆ Mouse clicks can be entered automatically using the AutoClick dwell feature.
- ◆ Single clicks can be converted to Double Click, Right Click, and Left and Right Drag.
- ◆ Integrated support for HeadMouse®.
- ◆ HotZones™ to allow use with many Windows full-screen games.
- ◆ Compatible with Windows 2000 and XP.

AutoClick

Mouse button clicks can be performed anywhere in the Windows environment using a dwell-selection technique known as AutoClick. This feature enters a left mouse button click after the mouse pointer is motionless for a programmable length of time. Pausing and restarting dwell selection is accomplished using the convenient AutoClick on/off button.

AutoClick dwell time can be adjusted to activate in 0.2 to 10 seconds after the pointer is held motionless.

Stability Compensation

The Jitter Box feature can be adjusted for a user's ability to control the mouse pointer. It works by defining a larger target area and thereby compensating for pointer instability. This adjustable tolerance greatly eases the dwell selection task.

Double Click, Drag, and Right Click

Dragger provides single switch control of most mouse click functions. Single left clicks, whether entered manually or with AutoClick,

can be converted to a right click, double click, or a drag and drop operation.

The Dragger toolbar has buttons associated with these clicking functions. A drag is performed by clicking the appropriate Drag button, clicking the item to be dragged, dragging it to a new location and clicking again to drop it. Double clicks and right clicks are performed in the same manner.

HotZones

Dragger32's HotZone mode was designed to allow Dragger functionality without the Dragger32 toolbar being visible on-screen. This allows un-obscured web browsing and Dragger functionality in many full-screen Windows games.

HotZones are eight invisible rectangles around the edges of the screen that you can assign various functions to. A group or set of HotZones can be defined and saved for use with a particular game. As you move the mouse cursor into a HotZone the internal computer speaker will play an "up tone". As you move the mouse out of a HotZone the internal speaker will play a "down tone".

HotZones

In addition to mouse buttons, HotZones can be used to enter multi-key combinations (example: CTL+A), character strings and random text while using a full screen application, such as a game. The multi-key combinations and character strings are configured before use. The random text, which can include multi-key combinations, is entered using the pop-up keyboard called by a HotZone. These capabilities can be used to control features of a full screen Windows application.

Access for Microsoft Windows

Any Windows application or utility can be accessed with an adaptive switch, an on-screen keyboard, Dragger and a pointer such as the HeadMouse®. Even for those people who cannot use a switch, AutoClick can be used in conjunction with the other Dragger features to provide complete access to Windows. Standard Windows applications and utilities can be used, existing files can be opened, edited, saved, and new ones created. Even Internet browsers can be used to access the Worldwide Web.

Dragger for Kids!

Dragger includes a reduced functionality mode designed especially for children. The toolbar is reduced to two buttons, the Left Drag and the AutoClick on/off button. This mode provides the most essential Dragger features; AutoClick and Left Drag, while hiding infrequently used functions and the Options menu. The Options menu is still available, it is just not as easy to access and therefore not as easy for a child to accidentally disturb program parameters or terminate the program.

Floating Toolbars

The Dragger toolbars are free floating windows that can be repositioned anywhere on the Windows desktop. In addition, they can be reoriented from a vertical orientation to a horizontal orientation. There are also four choices on key sizes: normal, large, larger and miniature. The toolbars shown in the previous figures are approximately three fourths of the “normal” size.

Compatibility

Dragger is a standard Windows application and works with other Windows applications including Origin Instruments on-screen keyboard SofType™.

For text entry with word prediction and integrated Dragger features please refer to information on SofType, Origin Instruments’ on-screen keyboard.

Hardware/Software Requirements for Dragger32

Dragger will run on any system capable of running Windows 2000 or XP.



Origin Instruments Corporation
854 Greenvew Drive
Grand Prairie, TX 75050, USA
Tel: 972-606-8740 Fax: 972-606-8741
Email: support@orin.com Web: www.orin.com
Online store: <http://shop.orin.com>